

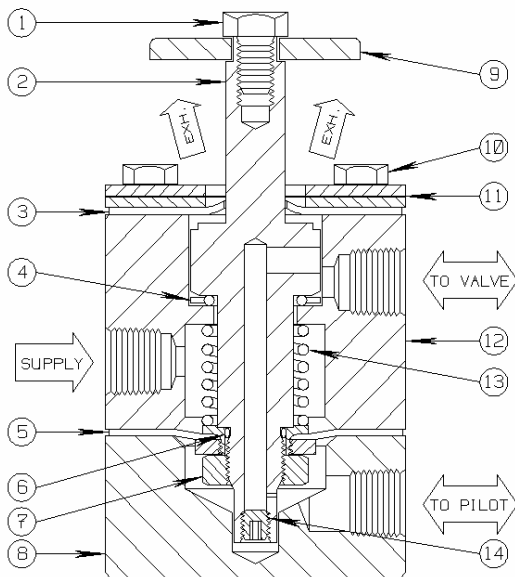
Manual Reset Relay

3-Way Normally Closed

1/4" FEMALE NPT, 40 PSI MIN - 150 MAX PSI, 303 SS

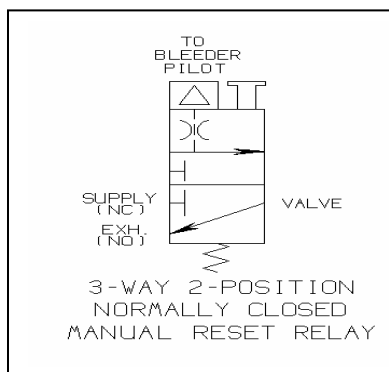
Model 11RRS3

Conforms to the SEP category of the European Pressure Equipment Directive
Issue No. 97/23/EC



The **11RRS3** is a two position, three-way normally closed block and bleed Manual Reset Relay valve. It is designed to establish Supply-to-Valve output pressure (50-150 PSI) with a manual **Pull** of the valve handle. To close the valve, **Push** on the valve handle to release downstream pressure.

Unlike traditional Manual Reset Relays, this valve delivers internal **pilot supply** pressure to the Pilot port; this pressure signal is usually maintained by a two way Bleeder type Flow Line Pilot. When the Bleeder Pilot or other ESD system component actuates, a loss of pilot pressure occurs that will actuate the valve, blocking incoming supply pressure and venting the accumulated pressure within the receiving control circuit. The 11RRS3 also has a special feature that will block the Supply (Inlet) port, whenever master supply pressure decreases below **40 PSI**. Manual reset is required after operating instrument supply pressure is restored.



PARTS LIST:

- | | |
|------------------|------------------|
| 1. Hex Bolt * | 8. Lower Body |
| 2. Valve Plunger | 9. Handle |
| 3. Top Seal * | 10. Hex Bolt * |
| 4. Block Seal * | 11. Retainers(2) |
| 5. Diaphragm * | 12. Upper Body |
| 6. O Ring * | 13. Spring * |
| 7. Jam Nut * | 14. Set Screw * |

* Indicates parts included in a Repair Kit

Sigma Model Number 11RRS3

1/4" FEMALE NPT, 40 PSI MIN-150 MAX PSI, 303SS

Product Specifications

Manual Reset (Operate) Feature: Pull and Hold to Open – Push to Close

Flow Control Application: Normally Closed

Control Function: Three-Way (Block & Bleed)

Pressure Rating Body (Control Ports): 150 PSI maximum (10.34 bar)

Instrument Supply Service at Control Ports: Pneumatic

Connection Size: 1/4-18 Female N.P.T. (Pilot, Supply, Valve)

Mounting: Field Mount assembly

Orifice: .250 Diameter

Seal Material: Buna (Standard Service only)

Component Material (Metal): 303 Stainless Steel

Weight: 4.3 Lbs.

Operating Temperature: -20° F to +250° F (-29° C to +121° C)

Overall Dimensions: 4-3/4 Height x 2-1/2 Diameter (12.07 cm Height x 6.35 cm Diameter)

Pressure Equipment Directive (PED): This product conforms to the SEP Category of the European P.E.D.

Installation and Maintenance Instructions:

Remove the Hex Bolts (#10) and mount using the Retainers (#11). Replace the four Hex Bolts. Sigma recommends the use of appropriate thread sealant for each port connection.

Shelf Position Port Status

Pilot	Pilot Supply Outlet to Bleeder Pilots
Supply	Inlet (Instrument Supply Pressure) normally closed
Valve	Outlet Pressure to Receiving Control Circuit (Open to Exhaust Port)
Exhaust	Depressurizes Receiving Control Circuit

Repair Kit Information

Repair Kits contain all of the Seals and other components typically replaced when repairing the assembly. In order to maintain optimum operating control function.