

Fusible Devices

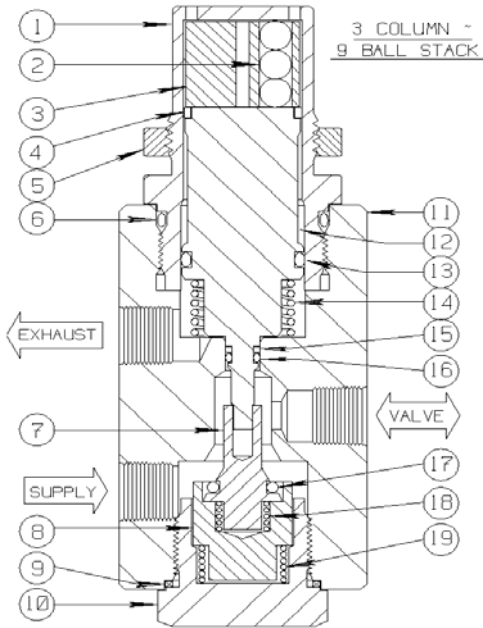
Fusible Valves - 3-Way Block & Bleed

1/4" FEMALE NPT, 3-WAY NO, 10,000 PSI MAX, PANEL MOUNT

Model 15RS155



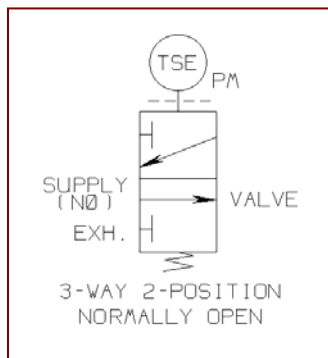
Conforms to the CE Category IV of the European Pressure Equipment Directive Issue Certificate No. 97/23/EC



The 15RS155 Fusible Valve is a two position, three-way normally open, Block & Bleed, **Temperature Sensitive** flow control device. When intense heat or close proximity to a fire causes the temperature to exceed the eutectic melting point, valve springs (Items 14, 18 and 19) decompress, moving Poppet (Item 7) to block the inlet supply pressure and vent downstream (receiving circuit) pressure through the exhaust port.

Fusible Valves are used to close safety valve actuators to isolate potential fuel sources from fire.

Fusible Valves are available with four common temperatures: 158° F, 203° F, 255° F and 281° F. Other temperatures are available through special order inquiry.



PARTS LIST:

- | | |
|----------------------|--------------------|
| 1. Fuse Retainer | 11. Valve Body |
| 2. Ball (9) * | 12. Valve Plunger |
| 3. Fusible Element * | 13. O Ring * |
| 4. Seal Ring * | 14. Spring * |
| 5. Panel Nut | 15. Back Up Ring * |
| 6. O Ring * | 16. O Ring * |
| 7. Poppet | 17. TFE O Ring * |
| 8. Cup Seal | 18. Spring * |
| 9. Copper Ring * | 19. Spring * |
| 10. Retainer | |

* Indicates parts included in a Repair Kit

Sigma Model Number 15RS155
1/4" FEMALE NPT, 3-WAY NO, 10,000 PSI MAX, PANEL MOUNT

Product Specifications

Flow Control Application: Normally Open

Control Function: Three-Way (Block & Bleed) – Stacked Ball

Pressure Rating Body (Control Ports): 10,000 PSI maximum (690 bar)

Media Service: Hydraulic Fluid

Temperature Service (Select): ____ 158° F. ____ 203° F. ____ 255° F. ____ 281° F

Note: Other specific temperature options available through special order.

Connection Size (Body): 1/4-18 Female N.P.T. Supply, Valve, Exhaust

Orifice: 7/32 Diameter **Cv Factor:** 0.74

Wetted Component Material (Metal): 316 Stainless Steel and 17-4PH SS

Seal Material: Viton

Panel Mount Hole Size: 1-1/4 Diameter

Weight: 4.0 Lbs.

Operating Temperature: -20° F to +250° F (-29° C to +121° C)

Overall Dimensions: 5-7/16 Height x 2-1/8 Diameter (13.81 cm Height x 5.40 cm Diameter)

Installation and Maintenance Instructions:

If the temperature in the area of the valve exceeds the rated temperature, the valve will open and the control system will trigger an exhaust of the hydraulic fluid from the actuator through the exhaust port. Sigma recommends the use of appropriate thread sealant for each port connection.

Shelf Position Port Status

Supply	Instrument supply pressure open to valve port
Valve	Outlet pressure to receiving control circuit (closed to exhaust port)
Exhaust	Depressurizes receiving control circuit upon actuation

Repair Kit Information

Repair Kits contain all of the Seals and other components typically replaced when repairing the assembly. In order to maintain optimum operating control function.