

Manual Reset Relay

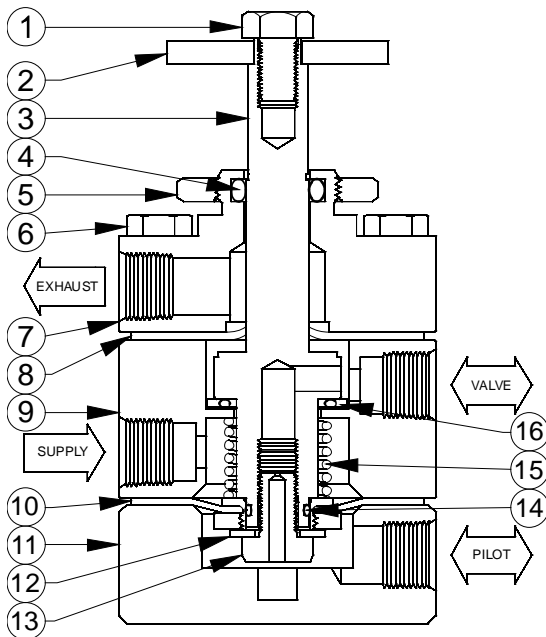
3-Way Normally Closed, Panel Mount

Model 11RRS93 - 40 PSI MIN - 150 MAX PSI, 11RRS105 H2S SVC

Model 11RRS94 - 23 PSI MIN - 150 MAX PSI, 11RRS106 H2S SVC



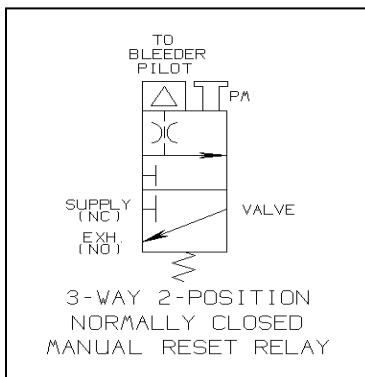
Conforms to the SEP category of the European Pressure Equipment Directive
Issue No. 97/23/EC



The **11RRS93-94** is a two position, three-way normally closed block and bleed Manual Reset Relay valve. It is designed to establish Supply-to-Valve output pressure (generally 50-150 PSI) with a manual **Pull** of the valve handle. To close the valve, **Push** on the valve handle to release downstream pressure.

Unlike traditional Manual Reset Relays, this valve delivers internal **pilot supply** pressure to the Pilot port, this pressure signal is usually maintained by a two way Bleeder type Flow Line Pilot. When the Bleeder Pilot actuates, a loss of pilot pressure occurs that will actuate the valve, blocking incoming supply pressure and venting the accumulated pressure within the receiving control circuit.

The valve also has a special feature that will block the Supply (Inlet) port, whenever master supply pressure decreases below 40 PSI or 23 PSI depending on model. Manual reset is required after operating instrument supply pressure is



PARTS LIST:

- | | | |
|---------------|-------------------|--------------------|
| 1. Hex Bolt * | 7. Exh. Deflector | 13. Orifice Bolt * |
| 2. Handle | 8. Top Seal * | 14. O Ring * |
| 3. Plunger | 9. Upper Body | 15. Spring * |
| 4. O Ring * | 10. Diaphragm * | 16. Block Seal * |
| 5. Panel Nut | 11. Lower Body | |
| 6. Hex Bolt * | 12. Washer * | |

* Indicates parts included in a Repair Kit

Sigma Model Number 11RRS93/94

150 MAX PSI, PANEL MOUNT

Product Specifications

Manual Reset (Operate) Feature: Pull and Hold to Open – Push to Close

Flow Control Application: Normally Closed

Control Function: Three-Way (Block & Bleed)

Pressure Rating Body (Control Ports): 150 PSI maximum (10.34 bar)
(Minimum pressure required: 40 PSI (11RRS93); 23 PSI (11RRS94))

Instrument Supply Service at Control Ports: Pneumatic

Connection Size: 1/4-18 Female N.P.T. (Pilot, Supply, Valve, Exhaust)

Panel Mount: Yes

Panel Hole Cutout Size Required: 1.00 Diameter

Orifice: .250 Diameter

Seal Material: Viton

Component Material (Metal): 316 Stainless Steel

Weight: 4 Lbs.

Operating Temperature: -20° F to +250° F (-29° C to +121° C)

Overall Dimensions: 4-3/4 Height x 2-1/2 Diameter (15.24 cm Height x 6.35 cm Diameter)

Pressure Equipment Directive (PED): This product conforms to the SEP Category of the European P.E.D.

Installation and Maintenance Instructions:

Remove the Hex Bolt (#1), Handle (#2), and Panel Nut (#5). Insert the Valve in a pre-drilled 1" diameter hole. Replace the Panel Nut, Handle, and Hex Bolt. Sigma recommends the use of appropriate thread sealant for each port connection.

Shelf Position Port Status

Pilot Pilot Supply Outlet (Use with Bleeder Pilots)

Supply Inlet (Instrument Supply Pressure) normally closed

Valve Outlet Pressure to Receiving Control Circuit (Open to Exhaust Port)

Exhaust Depressurizes Receiving Control Circuit