

HLR 7930 Pneumatic Sand Probe Relay (Panel Mount)

The HLR 7930 is a two position, three way Normally Open, pressure operated, panel mounted, manual reset flow control valve. Media pressure applied at the Pilot Supply port shifts the Stem assembly outward. The Inlet port becomes blocked to through flow and an Outlet (O) to Exhaust flow path is established. In this manner, the receiving control circuit is depressurized. Pushing inward on the Knob will reestablish the previous Normally Open flow path.

**Design Features:**

Dimensions: 1.500" Dia. X 4.250" L.

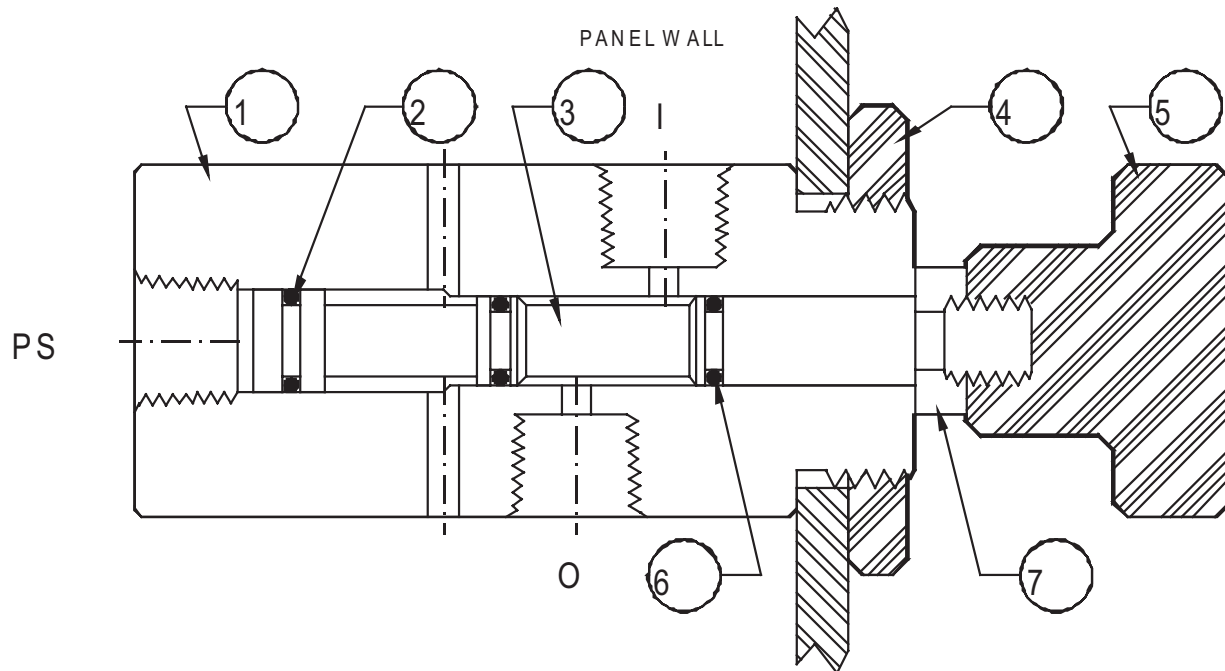
Working Pressure: Instrument Pressure - 200 PSI Max.

Process Pressure - 50 PSI Min, 10,000 PSI Max.

Connections: Control Ports - 1/4" - 18 FNPT.

Process Inlet - 1/4" - 14 FNPT.

Weight: 1 lb.



BILL OF MATERIAL

ITEM	PART NAME	PART NUMBER	MATERIAL
1.	Body	7931	316SS
2.	O-Ring	AS-011V95	Viton
3.	Stem	7932	316SS
4.	Panel Nut	7816	Delrin
5.	Knob	7572	Delrin
6.	O-Ring (2)	AS-010V95	Viton
7.	Jam Nut	3/8" - 16	302SS

Optional Models

7930R - Red Knob

7935 - Normally Closed