

HLR 7830 Emergency Shutdown Station (single line)



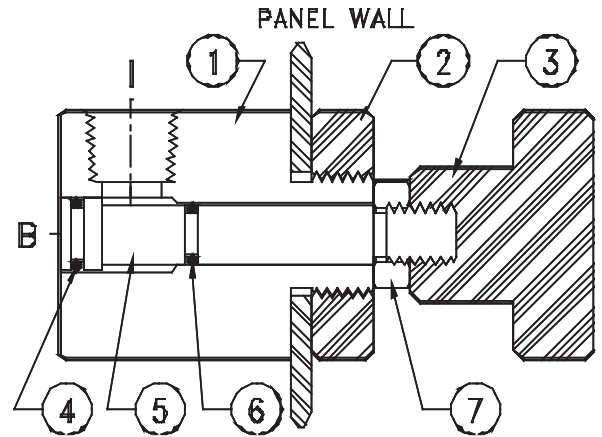
Single Line ESD Valve - HLR 7830

The HLR 7830 is a two position, two way Normally Closed quick exhaust valve that is manually operated. As shown below, the Knob is positioned inward to maintain control circuit pressurization.

Pulling outward on the Knob will establish an open-to-flow internal flow path to depressurize the ESD circuit. NOTE: The ESD control circuit is always orifice fed. This assembly is known as a "Single Line" ESD Valve.

BILL OF MATERIAL

ITEM	PART NAME	PART NUMBER	MATERIAL
1	Body	7831	316SS
2	Nut	7833	Delrin
3	Knob	7572	Delrin
4	O-Ring	AS-011V95	Viton
5	Stem	7832	316SS
6	O-Ring	AS-010V95	Viton
7	Jam Nut	3/8" - 16	302SS



Design Features:

Dimensions: 1.500" Dia. X 2.500" L.
 Working Pressure: 200 PSI Max.
 Connections: 1/4" - 18 NPT (Inlet).
 Weight: 1 lb.
 Panel Hole Required: .750" Dia.

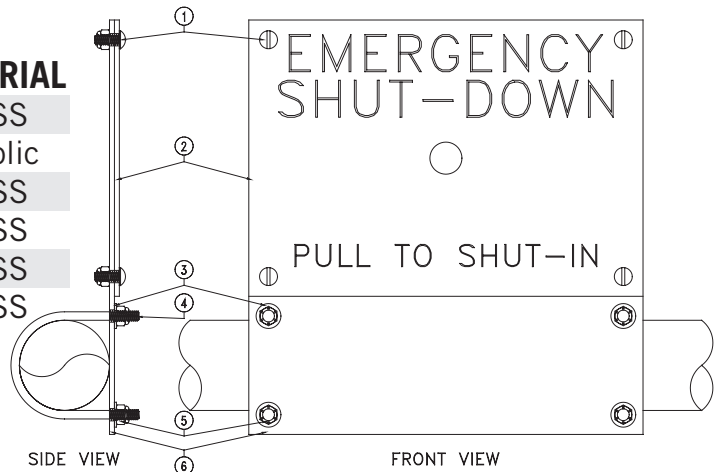
"ESD" Sign Assembly - HLR 7831S

Our Engraved Sign Assembly has a bright red background with large white lettering. The HLR 7830 "Single Line" or the HLR 7835 "Dual Line" Valves are generally installed with the assembly shown.

The ESD Valves are separate purchase items. Together, the ESD Valve and the Engraved Sign assembly form a complete ESD "Station."

BILL OF MATERIAL

ITEM	PART NAME	PART NUMBER	MATERIAL
1	Screw (4)	1/4"-20 x 1/2"	302SS
2	Engraved Sign	PTS ESDS	Phenolic
3	Washer (4)	1/4"-FW	302SS
4	U Bolt (2)	1/4"-20x2"	302SS
5	Lock Nut (8)	1/4"-20 NILN	302SS
6	Back Plate	PTS PLT	316SS



Options Available
 7830M - Boat Hook Option